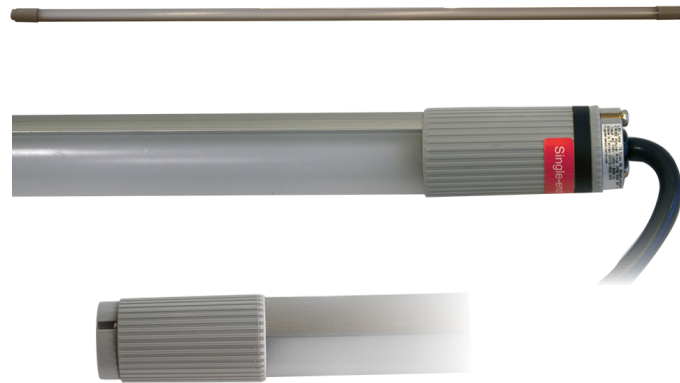


Tunnel Light - 21W

Model Number: VL TU04-21, electrical numbers on page 3

Features:

- ▶ Instant clip function
- ▶ High power-efficiency
- ▶ Flat light surface
- ▶ Low temperature
- ▶ Long service life
- ▶ Also available as frost tube and emergency light model
- ▶ Also available as Schuko and Wieland plug



3200
lm*

152
lm/W*

≥82
Ra

Application:

- ▶ Tunnels
- ▶ Technical facilities
- ▶ Service Corridors, Canals
- ▶ Temporary lighting



starQuick 28-32mm
Self-locking pipe clamp



Spring Steel Clip

Optical Information

Color Temperature	3000K, 4000K, 5700K
Lumen Output (lumen)	2900, 3100, 3200
Optics	180°
CRI	≥82
Lumen Maintenance (L70)	50,000h +

Environmental Factor

Operating Temperature	-40 ~ +40°C
Protection Level	IP65
Waranty	3 years

Mechanical Information

Dimensions (W x H)	1500mm x 31.5mm
Weight	560g
Connecting Cable	1600mm

Electrical Information

Input Voltage	100-240V AC
Power Consumption	21W
Dimmibility	Optio

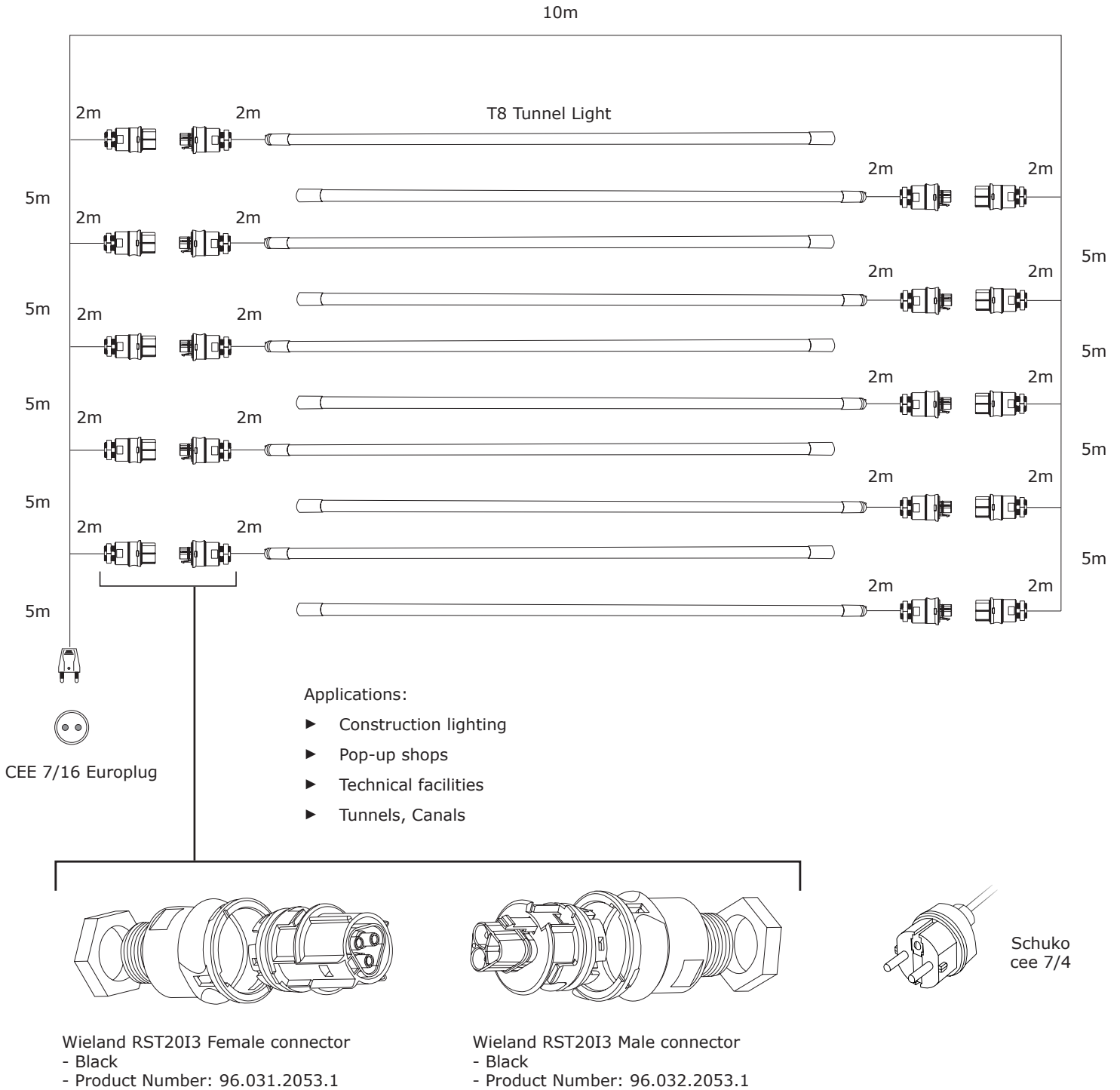
*The values for 5700K version

Tunnel Light - 21W

Model Number: VL TU04-21, electrical numbers on page 3

Mobile lighting system

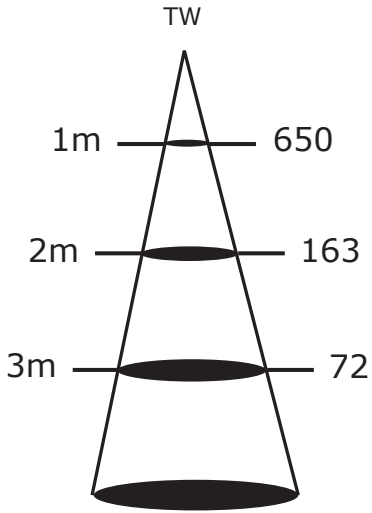
System diagram



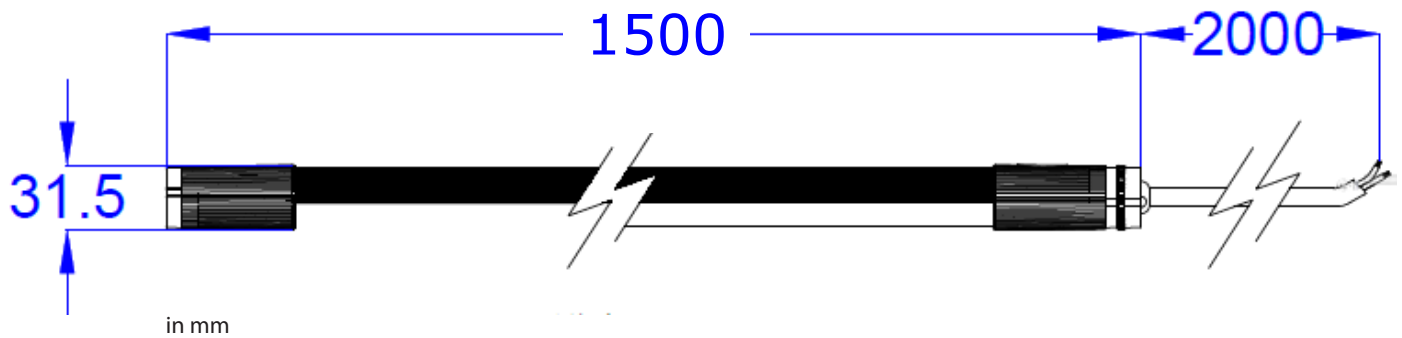
Tunnel Light - 21W

Model Number: VL TU04-21

Illuminance at Distance



Lux (Typ.)



Power	Product Numbers	Plug	Electrical Numbers (in Finland)	Beam Angle	CCT	lux @ 1m	Lumen (lm)
21W	VL TU04-WWP21QF	Wieland	n/a	180°	3000K		2900
	VL TU04-BWP21QF	Barewire	n/a	180°			
	VL TU04-WNP21QF	Wieland	4526741	180°	4000K		3100
	VL TU04-BNP21QF	Barewire	4526743	180°			
	VL TU04-WTP21QF	Wieland	n/a	180°	5700K	650	3200
	VL TU04-BTP21QF	Barewire	n/a	180°			

Also available:

Length: 1200mm (4ft)

Color Temperatures: 2500K, 3500K, 4500K and 7000K

CRI 92

